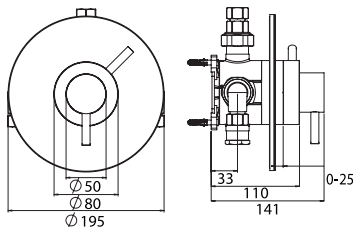
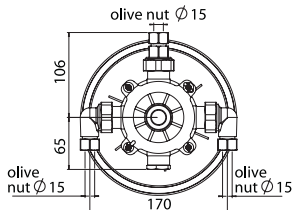


Elina TMV3 Built-In thermostatic mixer shower



Dimensions given are approximate

WRAS
APPROVED
PRODUCT



Temperature Control	Thermostatic
Inlet Connections	15mm compression to flat face union
Water Entry Points	Rising, falling, back
Outlet Connection	1/2" BSP top or bottom
Plumbing System Compatibility	Low and High pressure
Minimum Running Pressure/Flow	0.1 Bar @ 8 l/min
Maximum running pressure	5 Bar
Open outlet flow at 0.1 Bar	9.4l/min
Maximum Static Pressure	10 Bar
Maximum Flow with Flow Limiters Fitted	12l/min
Built-In depth	55mm minimum
Pipe Inlet Centres	170mm
Approvals, Complies with	TMV3
Guarantee	3 years

Operating Features

- Thermostatic temperature control to within 1°C
- Separate flow and temperature controls
- Automatic shutdown if hot or cold supplies fail
- Tamper proof lever controls
- Simple to install and maintain
- Factory set maximum temperature at 38°C
- Flow limiters supplied

Ideal use in care homes, hospitals and nursing homes

Finish	Code
Chrome	ELITMV3BTCM