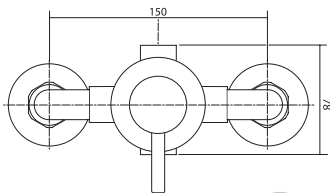
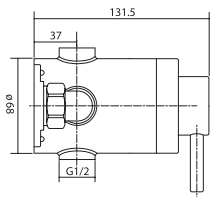


Elina TMV3 Exposed Sequential thermostatic shower



WRAS
APPROVED
PRODUCT



Dimensions given are approximate

Operating Features

- Thermostatic temperature control to within 1°C
- Single control for temperature control with a constant flow
- Automatic shutdown if hot or cold supplies fail
- Tamper proof lever controls
- Simple to install and maintain
- Factory set maximum temperature at 38°C
- Flow limiters supplied

Ideal use in care homes, hospitals and nursing homes

Finish	Code
Chrome	ELITMV3EXSL

Temperature Control	Thermostatic
Inlet Connections	15mm compression
Water Entry Points	Rising, falling, back
Outlet Connection	1/2" BSP top or bottom
Plumbing System Compatibility	Low and High pressure
Minimum Running Pressure/Flow	0.1 Bar @ 8 l/min
Maximum running pressure	5 Bar
Open outlet flow at 0.1 Bar	4l/min
Maximum Static Pressure	10 Bar
Maximum Flow with Flow Limiters Fitted	12l/min
Pipe Inlet Centres	150mm
Approvals, Complies with	TMV3
Guarantee	3 years