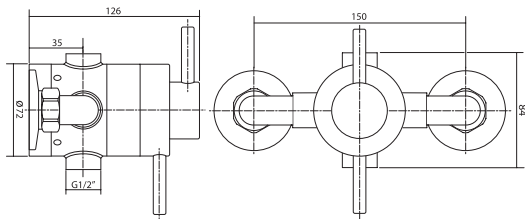


# Elina Exposed

## thermostatic mixer shower



Dimensions given are approximate



### Operating Features

- Thermostatic temperature control to within 2°C
- Separate flow and temperature controls
- Automatic shutdown if hot or cold supplies fail
- Tamper proof lever controls
- Simple to install and maintain
- Factory set maximum temperature at 38°C
- Flow limiter supplied

Ideal use in hotels and guest houses

Finish	Code
Chrome	ELIEXCM

Temperature Control	Thermostatic
Inlet Connections	15mm compression
Water Entry Points	Rising, falling, back
Outlet Connection	1/2" BSP top or bottom
Plumbing System Compatibility	Low and High pressure
Minimum Running Pressure/Flow	0.1 Bar @ 8 l/min
Maximum running pressure	5 Bar
Open outlet flow at 0.1 Bar	5.7l/min
Maximum Static Pressure	10 Bar
Maximum Flow with Flow Limiter Fitted	8l/min
Pipe Inlet Centres	150mm
Approvals, Complies with	BS EN 1111, 1287
Guarantee	3 years