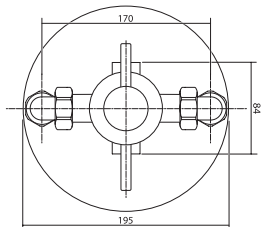
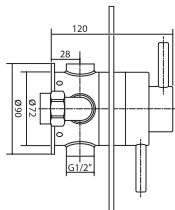


Elina Built-In Concentric Mixer

thermostatic shower



Operating Features

- Thermostatic temperature control to within 2°C
- Separate flow and temperature controls
- Automatic shutdown
- Tamper proof lever controls
- Simple to install and maintain
- Factory set maximum temperature at 38°C

Ideal use in hotels and guest houses

Finish	Code
Chrome	ELIBTCM

Temperature Control	Thermostatic
Inlet Connection	15mm compression
Water Entry Points	Top, bottom, back
Outlet Connection	1/2" BSP
Plumbing System	Low and High pressure
Minimum Running Pressure/Flow	0.1 Bar @ 8 l/min
Maximum running pressure	5 Bar
Open outlet flow at 0.1 Bar	5l/min
Maximum Static Pressure	10 Bar
Flow limiter supplied	8l/min max flow
Built-In depth	55mm minimum
Approvals	Complies BS EN 1111, 1287
Guarantee	3 years