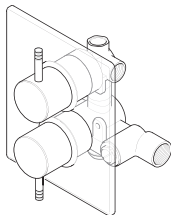
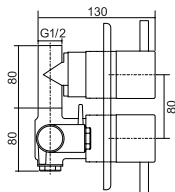
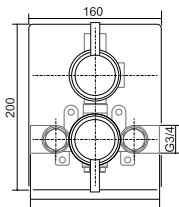




Elina Dual Control with Diverter

thermostatic mixer shower



Dimensions given are approximate

Temperature Control	Thermostatic
Inlet Connections	3/4" BSP
Water Entry Points	Rising, falling, back
Outlet Connection	1/2" BSP
Plumbing System Compatibility	Low and High pressure
Minimum Running Pressure/Flow	0.1 Bar @ 8 l/min
Maximum running pressure	5 Bar
Open outlet flow at 0.1 Bar	5l/min
Maximum Static Pressure	10 Bar
Maximum Flow with Flow Limiter Fitted	8l/min
Built-in depth	65mm minimum
Approvals, Complies with	BS EN 1111, 1287
Guarantee	3 years

Operating Features

- Thermostatic temperature control to within 2°C
- Separate diverter and temperature controls
- Automatic shutdown if hot or cold supplies fail
- Tamper proof lever controls
- Simple to install and maintain
- Factory set maximum temperature at 38°C
- Flow limiter supplied

Ideal use in hotels and guest houses

Finish	Code
Chrome	ELIBTDIV