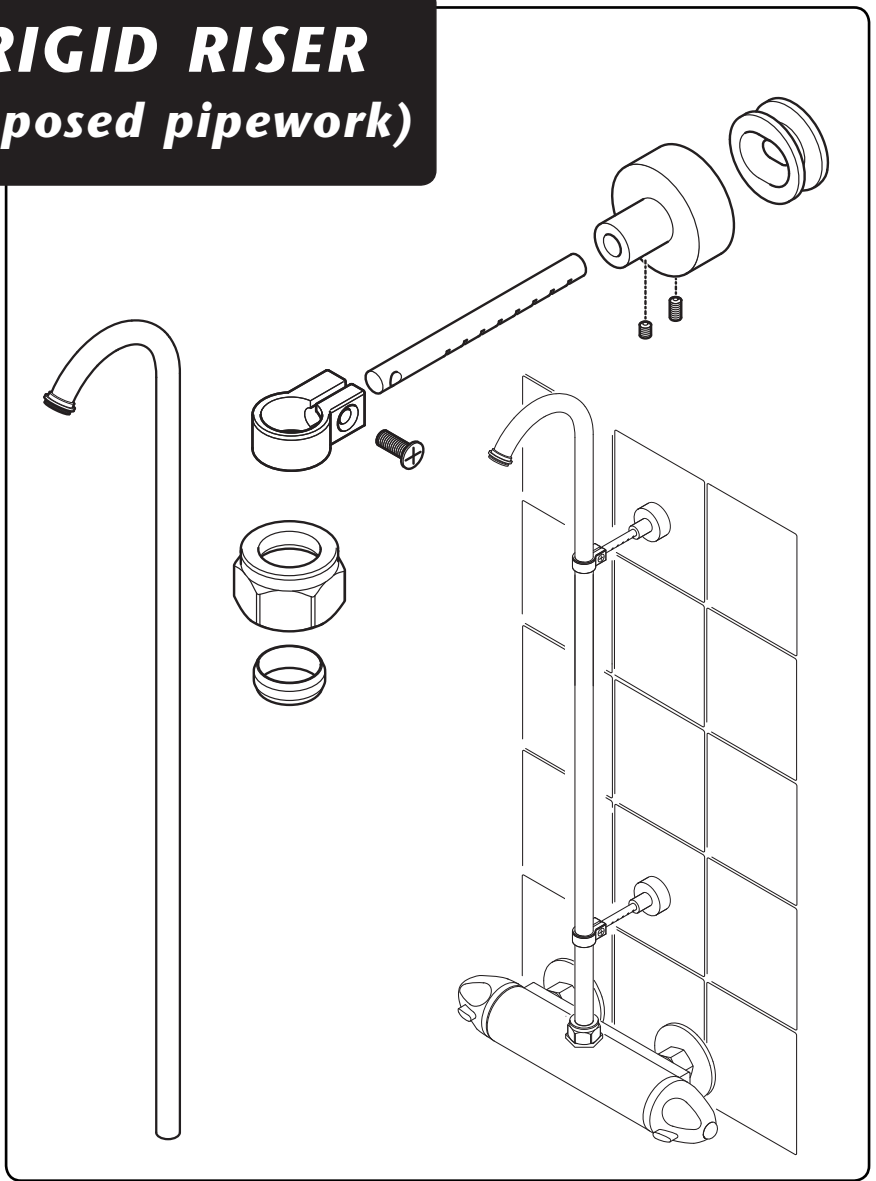
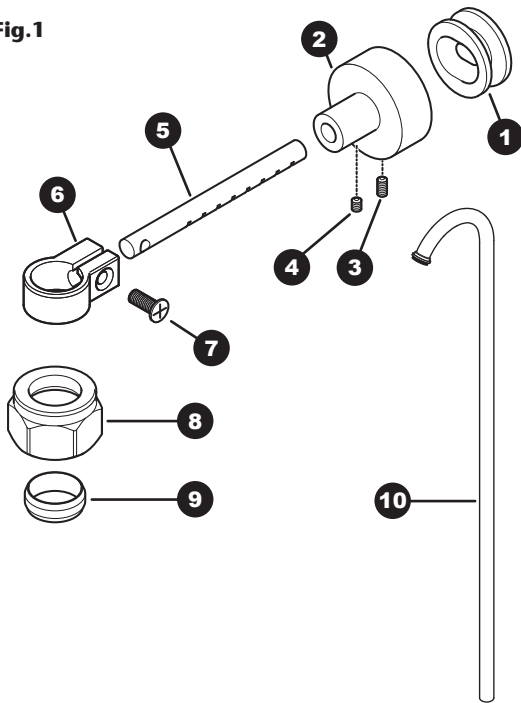


RIGID RISER *(exposed pipework)*



INSTALLERS PLEASE NOTE THESE INSTRUCTIONS ARE TO BE LEFT WITH THE USER

Fig.1



COMPONENTS

The riser bar kit is supplied as shown in **(fig.1)** and comprises of the following:

1. Mounting plate X2
2. Bracket X2
3. Grub Screw (M4x8) X2
4. Grub Screw (M4x3.5) X2
5. Mounting bar X2
6. Pipe collar X2
7. Retaining screw (M4x13) X2
8. Compression nut 15mm
9. Olive 15mm
10. Riser bar

INTRODUCTION

This guide contains all the necessary fitting instructions for your (exposed pipework) riser bar kit. The bracket has been designed to be surface mounted, using 15mm pipework and can be used with a mixer with 1/2" BSP fixings.

Please read the instructions carefully. Read through the whole of this guide before beginning installation.

The bracket installation should be carried out by a suitably competent person following the sequence of the instruction book.

Fig.2

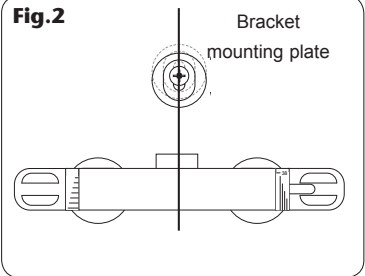


Fig.3

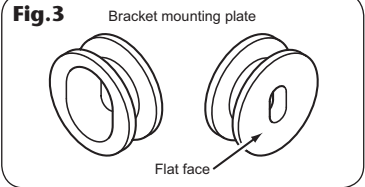
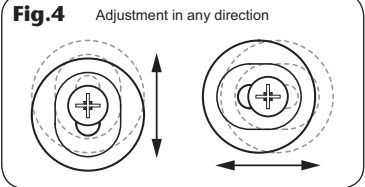


Fig.4



WARNING!

Check there are no hidden cables or pipes before drilling holes for wall plugs. Use great care when using power tools near water. The use of a residual current device (RCD) is recommended.

INSTALLATION

Mark the desired position of the Bracket mounting plate on the wall making sure that it is located directly above the top outlet of the mixer fitted (**fig.2**). It is recommended that the top pipe collar is approximately 10cm away from the start of the curve on the riser pipe (**fig.6**), the placement of the other collar is at the installers discretion. Drill the wall and fit the Mounting plate using suitable wall plugs and screws.

Note: The flat face of the mounting plate should be against the face of the wall (**fig.3**).

The fixing hole in each mounting plate is elongated to allow some final adjustment (**fig.4**).

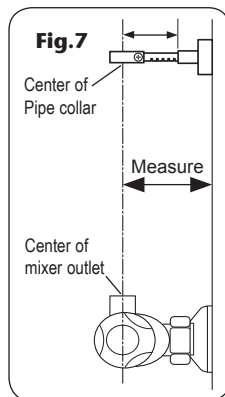
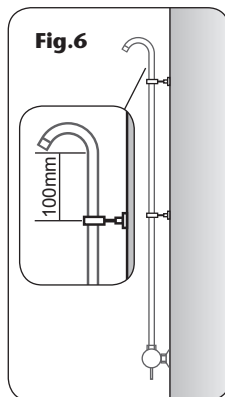
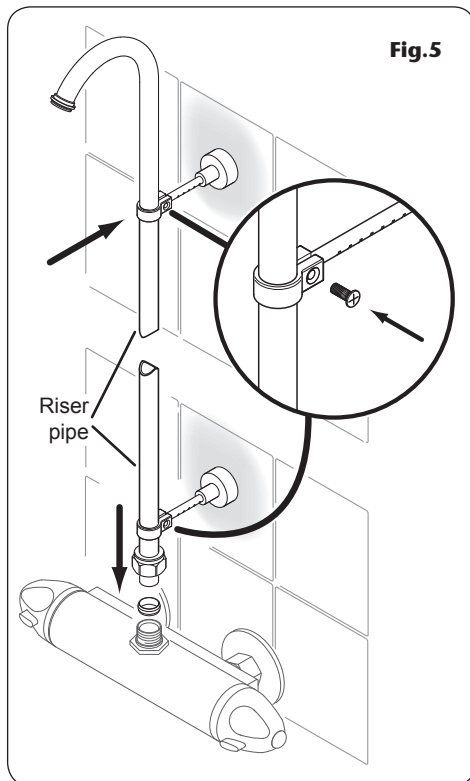
Fit the Bracket over the Mounting plate and secure with the longer of the two grub screws. Assemble the Pipe collar, Mounting bar and Retaining screw (*do not tighten this yet*). Once assembled slide onto the riser pipework (**fig.5**).

Make sure that the compression nut is placed onto the bottom of the riser pipework and then fit the olive. Install and tighten the riser pipe into the top of the mixer. Insert the Mounting bar into the Bracket (**fig.5**).

A measurement from the wall surface to the centre of the mixer outlet can be made (*this will vary depending on the mixer fitted*) and the assembly moved in and out of the bracket until the centre of the Pipe collar is the same distance from the wall (**fig.7**).

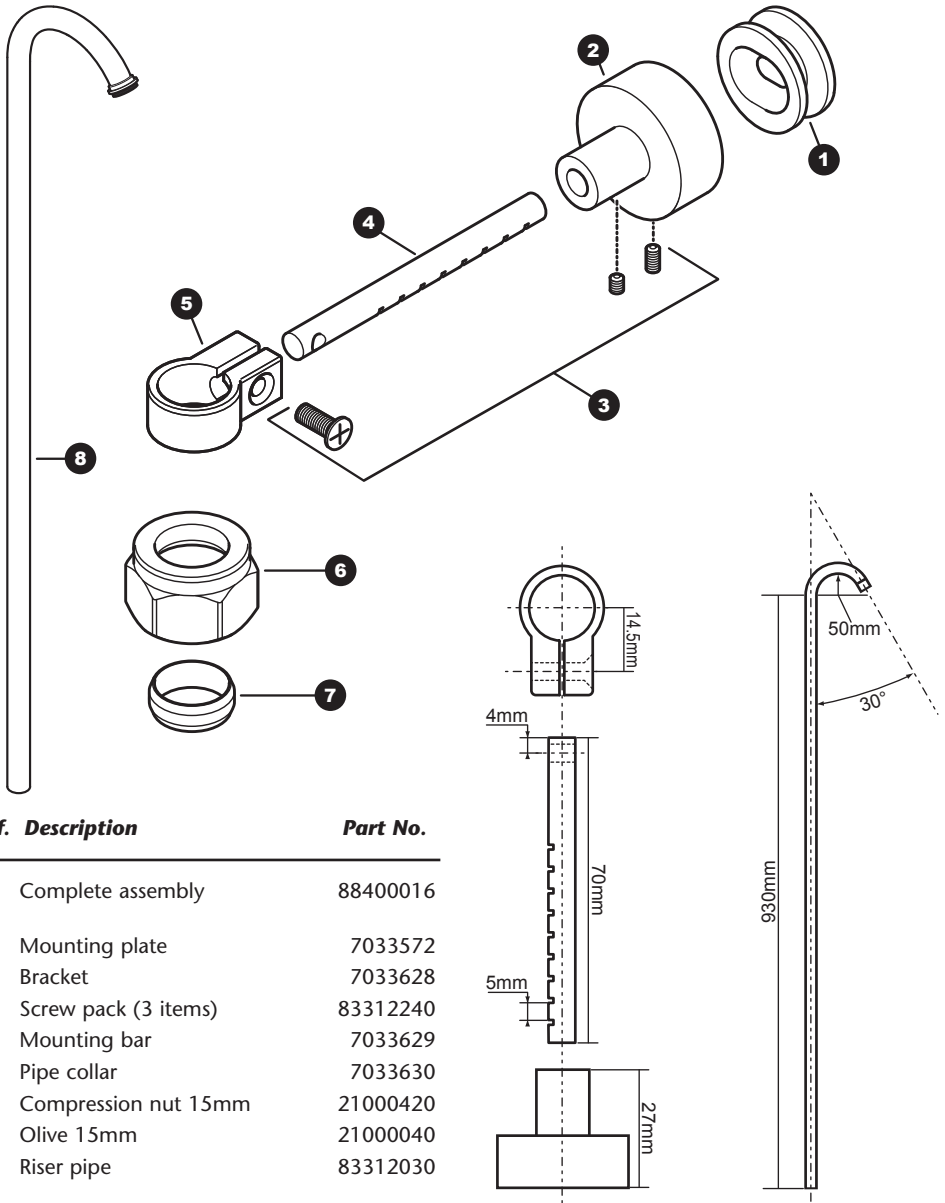
Finally tighten the small grub screw into the Bracket to secure the Mounting bar and tighten the Retaining screw into the Pipe collar.

Note: If the assembled Pipe collar can not be positioned correctly the Mounting bar has a series of grooves cut into it as a guide for shortening it.



RIGID Riser (exposed pipework)

SPARE PARTS & DIMENSIONS



Ref.	Description	Part No.
—	Complete assembly	88400016
1.	Mounting plate	7033572
2.	Bracket	7033628
3.	Screw pack (3 items)	83312240
4.	Mounting bar	7033629
5.	Pipe collar	7033630
6.	Compression nut 15mm	21000420
7.	Olive 15mm	21000040
8.	Riser pipe	83312030

Please refer to shower installation and operating instructions for service details. E&OA.