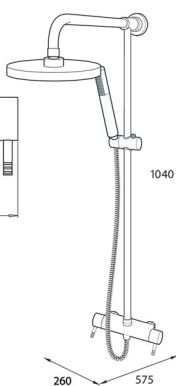
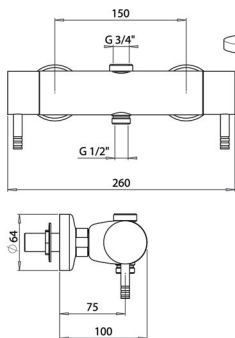


Unichrome Thames Bar Mixer with Diverter

thermostatic mixer shower



Dimensions given are approximate

Operating Features

- Thermostatic to within 2°C
- Separate diverter and temperature controls
- Automatic shutdown if hot or cold supplies fail
- Flow limiters supplied
- Adjustable rub clean fixed showerhead
 - Single spray pattern
- Rub clean handset
 - Single spray pattern

Temperature Control	Thermostatic
Plumbing System Compatibility	High pressure or low pressure with a pump
Inlet Connections	1/2" BSP to 3/4" flat face union
Water Entry Points	Back
Outlet Connection	3/4" BSP top and 1/2" BSP bottom
Minimum Running Pressure/Flow	0.5 Bar @ 8l/min Bar or 0.1 Bar (with a pump)
Maximum Running Pressure	5 Bar
Maximum Static Pressure	10 Bar
Open Outlet Flowrate at 0.5 Bar	20l/min
Maximum Flow with Flow Limiters Fitted	12l/min
Pipe Inlet Centres	150mm
Approvals, Complies with	BS-En 1111, 1287
Guarantee	5 years

Finish	Code
Chrome	UNTHTHBM