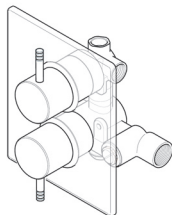
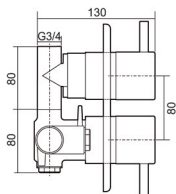
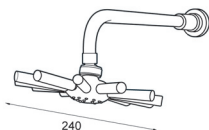
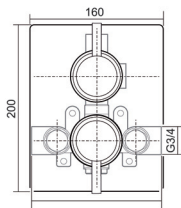


Unichrome Thames

Dual Control with Diverter

thermostatic mixer shower



Dimensions given are approximate

Operating Features

- Thermostatic to within 2°C
- Automatic shutdown if hot or cold supply fails
- Separate diverter and temperature controls
- Flow limiters supplied

Finish	Code
Chrome	UNTHDCDIV

Temperature Control	Thermostatic
Plumbing System Compatibility	Low and high pressure
Inlet Connections	3/4" BSP
Water Entry Points	Rising, falling, back
Outlet Connection	3/4" BSP top
Minimum Running Pressure/Flow	0.1 Bar @ 8l/min or 0.1 Bar* (with a pump)
Maximum Running Pressure	5 Bar
Maximum Static Pressure	10 Bar
Open Outlet Flowrate at 0.1 Bar	6.3l/min
Built-In depth	65mm minimum
Maximum Flow with Flow Limiters Fitted	12l/min
Approvals, Complies with	BS-En 1111, 1287
Guarantee	5 years

* Recommended 1 Bar or above for both applications