

Elina Lever Bar Mixer - Valve Only

Type 3 Thermostatic Mixer Shower

Product Codes

Elina Type 3 Lever Bar Mixer Shower (Valve Only)	TMELBLN2
--	----------



Installation

- Compression fit fixings
- 1/2" BSP

End User

- Separate flow and temperature controls for ease of use
- Automatic shutdown safety feature if hot/cold water supplies fail
- Thermostatic temperature control and Type 3 (TMV) approval for added peace of mind
- KIWA UK Reg 4 approved for water supply regulations compliance (*Valve only)
- Suitable for all pressure systems
- Simple to install and maintain

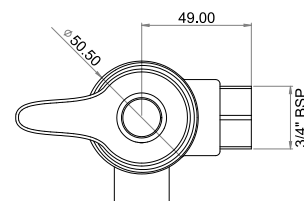
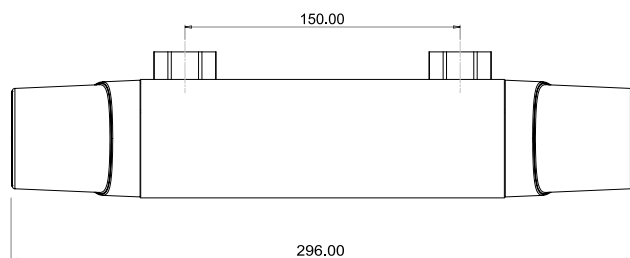


Elina Lever Bar Mixer - Valve Only

Type 3 Thermostatic Mixer Shower

Shower

Temperature Control	Thermostatic
Plumbing System Compatibility	All systems
Inlet Fittings	Compression fit
Inlet Connection	1/2" BSP to 3/4" flat face union
Outlet Connection	1/2" BSP bottom
Minimum Running Pressure/Flow	0.1 Bar
Maximum Running Pressure	5 Bar
Maximum Static Pressure	10 Bar
Approvals, Complies with	KIWA Type 3 (thermostatic mixing valve), KIWA UK Water Regulation 4
Guarantee	5 years



Contact our specification team

Call: 02476 324 776 | Email: specification@tritonshowers.co.uk | Web: www.tritonshowers.co.uk/specifiers