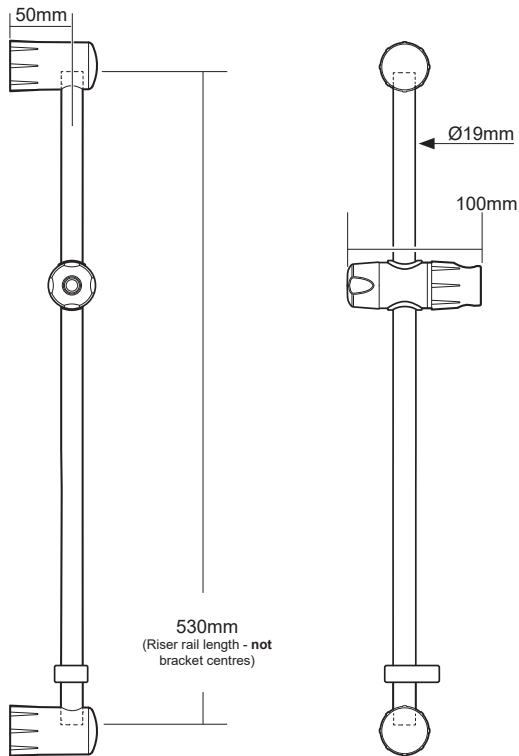


# AARON

## Riser Rail Assembly

88900035 / 88900055



All dimensions are approximate.

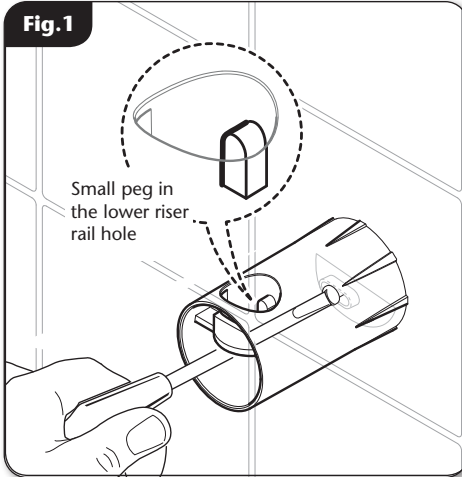
# Installation Instructions

INSTALLERS PLEASE NOTE THESE INSTRUCTIONS ARE TO BE LEFT WITH THE USER

2180856K - June 2025

## FITTING THE AARON RISER RAIL ASSEMBLY

Fig.1



## FITTING THE RISER RAIL

### WARNING!

Check there are no hidden cables or pipes before drilling holes for wall plugs. Use great care when using power tools near water. The use of a Residual Current Device (RCD) is recommended.

**IMPORTANT:** This riser rail assembly should be installed in the following sequence to allow correct measurement and placement of the bracket holes.

Decide the position for the rail on the wall within the shower area and proceed as follows.

Offer the lower bracket to the wall.

**NOTE:** The lower bracket has a small peg in the riser rail hole.

Position the bracket on the wall and mark the hole. Remove the bracket then drill and plug the wall. An appropriate drill bit should be used. If the wall is brick, plasterboard or a soft building block, appropriate wall plugs and screws should be fitted.

Replace the bracket to the wall and secure in place using the screw supplied (**fig.1**).

**NOTE:** The locating hole is elongated to allow for some horizontal adjustment.

Locate the rail into the bracket making sure it fits correctly into place. The notch in the riser rail should be located onto the peg in the bracket.

Fit the upper bracket onto the riser rail, making sure the rail is vertical. Mark the hole. Remove the bracket and rail, then drill and plug the wall.

Fit the locking mechanism to the shower head holder so that the holes align, then slide onto the rail (**fig.2**).

Tighten the holder to the rail. Ensure the tapered thin end of the shower head holder is in the upper position.

Slide the hose retainer onto the riser rail below the shower head holder (**fig.3**).

Fig.2

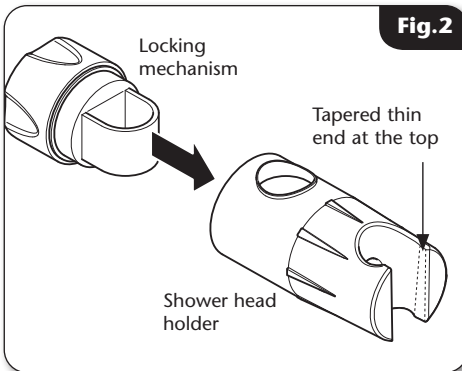
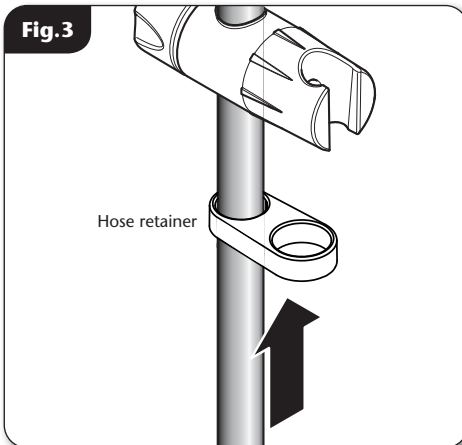


Fig.3



## FITTING THE AARON RISER RAIL ASSEMBLY

**IMPORTANT: The hose retainer should be used to comply with Water Regulations. If the hose retainer is not used, Water Regulations require the fitting of a double check valve or similar device in the supply pipework to prevent backflow.**

Place the rail back into the lower bracket then into the upper bracket and secure to the wall with the screw supplied.

Fit the end caps onto both brackets. The end caps will only fit one way.

### FITTING THE HOSE AND SHOWER HEAD

Feed the flexible hose through the hose retainer (**fig.4**).

**NOTE: Each end of the flexible hose is different. The end with the two flats should be connected to the shower head (**fig.5**).**

Screw the hose to the shower outlet and shower head, making sure the supplied washers are in place at both ends of the hose, and the correct ends are fitted to the shower and shower head.

Place the shower head into the holder and check that it fits correctly.

**NOTE: The shower head will not fit in the holder without the hose attached. The holder is slightly tapered and the shower head and hose will only fit from the top.**

Fig.4

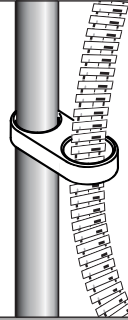
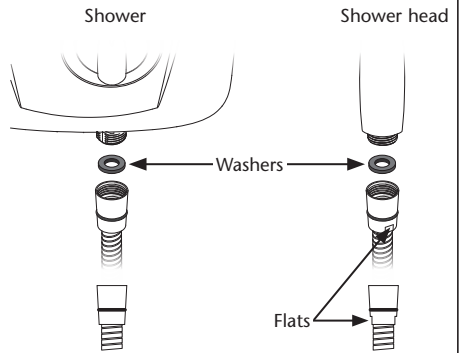


Fig.5



## **SPARE PARTS**

To purchase a genuine Triton spare part for your product, please visit

**[www.tritonshowers.co.uk/spares](http://www.tritonshowers.co.uk/spares)**

for product codes and prices.

Alternatively please call our

Customer Experience team on

**024 7637 2222** to order direct.

Please have your model name available.