

# MIXER SHOWERS & TAPS

First For Coordinating Solutions



## TRITON

See you first thing Britain

Triton knows that selecting the right brassware for the customer and job is not always that straightforward. So to help, we have introduced some simple solutions across the Triton range that can direct you to the ideal choice every time. Whether it's specifically for an adapted bathroom or a simple but durable combination for student accommodation within Triton's range - there will be a coordinated solution for you.

And remember, every product comes with a Triton full parts and labour guarantee and after sales support.

It's the full package, the first choice for your first thing.



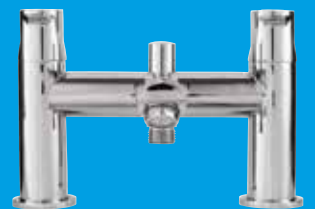


Choose the solution required and then look for the relevant colour or symbol to find the right Triton products for you...



### Value for money

Pages 4 - 7



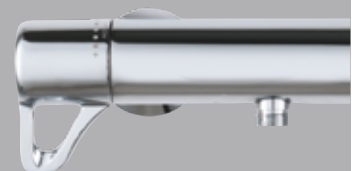
### Ease of installation

Pages 8 - 13



### Affordable style

Pages 14 - 29



### Inclusive Showering

Pages 30 - 33



# EXE - Quality at a great price

Want quality, durability and value for money? Then look no further than the Triton EXE range. Offering both mixer and taps with two handle options, EXE is ideal for replacements having standard inlet centres. It's perfect for social housing or student accommodation.

All EXE products will work with all water systems, including gravity fed.



## EXE Bath Shower Mixer

### Standard Handle

UNEXBSM

- Diverts water between bath and handset
- Extended 1.75m hose for ease of use
- Suitable for all water systems including gravity fed
- Appealing design and great value for money
- Durable design including ceramic disc flow control
- Easy to operate quarter turn controls
- Manual temperature control



## EXE Lever Bath Shower Mixer

### Lever Handle

UNEXBSMINC

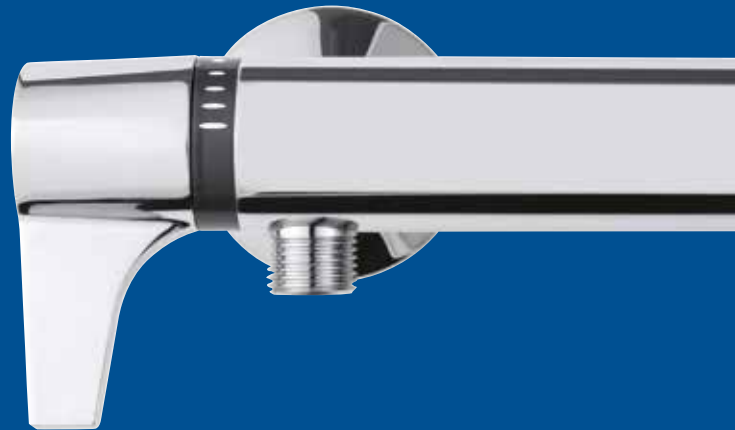
- As above but with accessible easy to use lever controls





### Easy to use Lever handles

Suitable for all applications and user abilities. The sleek paddle makes EXE the ideal combination of style and functionality



### EXE Bar Mixer Standard Handle

UNEXTHBM

- Suitable for all water systems including gravity fed
- Appealing design and great value for money
- Durable design including ceramic disc flow control
- 1 piece, 1 screw rail fixings with adjustable centres
- Thermostatic control



### EXE Lever Bar Mixer Lever Handle

UNEXTHBMINC

- As above, but with the benefit of easy to use lever handles



# EXE - Tap Range



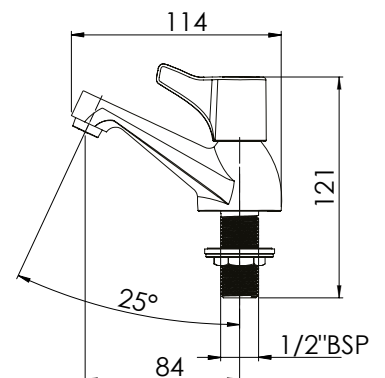
## EXE Basin Tap Pair

Lever Handle

UNEXTPBASLE

NEW

- Easy to grip and turn lever handles
- Durable design including ceramic disc flow control
- Good flow rates, even on a gravity system
- Co-ordinating chrome indices with etched H & C
- Metal backnuts for secure fixing





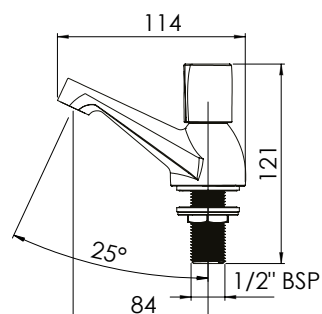
## EXE Basin Tap Pair

Standard Handle

NEW

UNEXTPBAS

- Contemporary twist on a classic style
- Durable design including ceramic disc flow control
- Good flow rates, even on a gravity system
- Co-ordinating chrome indices with etched H & C
- Metal backnuts for secure fixing



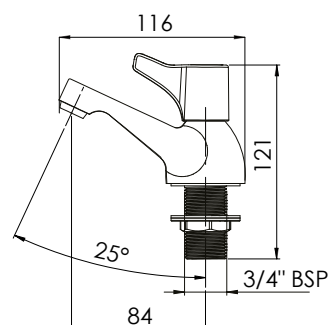
## Bath Tap Pair

Lever Handle

NEW

UNEXTPBTHLE

- Easy to grip and turn lever handles
- Durable design including ceramic disc flow control
- Good flow rates, even on a gravity system
- Co-ordinating chrome indices with etched H & C
- Metal backnuts for secure fixing



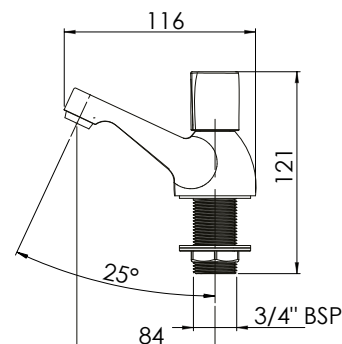
## Bath Tap Pair

Standard Handle

NEW

UNEXTPBTH

- Contemporary twist on a classic style
- Durable design including ceramic disc flow control
- Good flow rates, even on a gravity system
- Co-ordinating chrome indices with etched H & C
- Metal backnuts for secure fixing



# Dene-Making your job easier

Dene offers a range of showers with all the necessary fittings to complete the job, from wall plugs and screws to push-fit pipe connections, from inlet filters to flow limiters. Made for the installer, its contemporary, sleek design will also appeal to homeowners.

With performance to suit a wide variety of installation conditions including gravity-fed supplies and copper or plastic pipe, Dene is versatile enough to carry on the van, knowing that householders will also enjoy thermostatic control and generous flow rates. From bar mixers to a statement diverter, all have been designed with style and installation in mind. To complete the look, a brand new range of coordinating taps is also now available.



## Dene Bar Mixer

### Standard Specification:

- All chrome with quality metal handles
- Suitable for all water systems including gravity fed
- Durable design including ceramic disc flow control
- Riser rail kit with adjustable top bracket
- 3 spray pattern rub clean shower head



- Fast fit surface brackets
- Easy-fit pipe spacing guide
- Push fit pipe connectors
- Connects to plastic or copper pipes







### Dene Design

With a tactile but easy to turn handle, the Dene's smooth operation makes the Dene range easy to use for all.



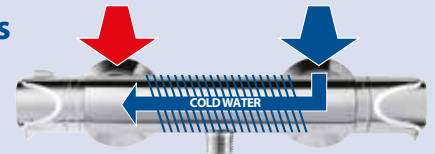
## Dene Bar Mixer Range provides a variety of choice to meet your expectations first time!

### Dene Cool Touch Bar Mixer for families

UNDETHBMCT

**As the standard mixer but also featuring:**

- Cool to touch valve



The cold supply runs across the valve before being mixed.

### Dene Hi-Flo Bar Mixer for performance

UNDETHBM

**As the standard mixer but also featuring:**

- Generous Flow Rates
- 5.0 l/min at 0.1 bar

### Dene Eco Bar Mixer for water saving

ECODETHBM

**As the standard mixer but also featuring:**

- 6 l/min official water efficiency rating
- Factory fitted flow limiter
- Assists compliance with Building Regulations and the Home Quality Mark (HQM)
- Dene ECO meets the new advanced fittings standard



### Dene Diverter Bar Mixer

UNDETHBMDIV

- All chrome valve with quality metal handles
- Diverts between pivot shower head and handset
- Handset is height adjustable for families
- Large diameter pivot shower head
- 3 spray pattern rub clean handset



**WRAS**  
APPROVED  
PRODUCT





### Dene Concentric Mixer

UNDETHEXCM

- Accessible forward facing controls
- Suitable for all water systems including gravity fed
- 3 spray pattern rub clean shower head



### Dene Sequential Mixer

UNDETHEXSQM

- Single control for temperature adjustment with constant flow
- Suitable for all water systems including gravity fed
- 3 spray pattern rub clean shower head



# Dene-Tap Range



## Dene Bath Shower Mixer

UNDEBSM

- Diverts between bath and handset
- Extended 1.75m hose offers additional reach
- 3 spray pattern rub clean shower head
- Shower head holder included
- Manual temperature control



**WRAS**  
APPROVED  
PRODUCT



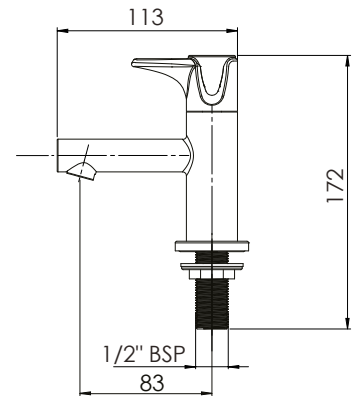


### Dene Basin Tap Pair

NEW

UNDETPBAS

- Appealing all chrome design
- Durable design including ceramic disc flow control
- Good flow rates, even on a gravity system
- Lever handles are easy to grip and turn
- Metal backnuts for secure fixing
- Slotted click clack waste included

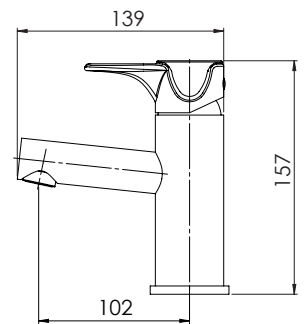


### Dene Basin Mono Mixer Tap

NEW

UNDETPBAM

- Appealing all chrome design
- Durable design including ceramic disc flow control
- Good flow rates, even on a gravity system
- Lever handle is easy to grip and turn
- Horseshoe plate for secure fixing
- Flexible tap connectors
- Slotted click clack waste included

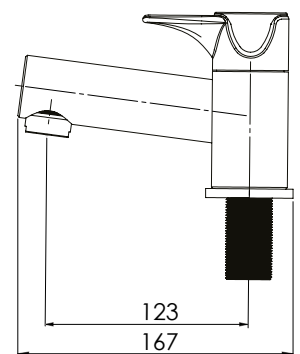
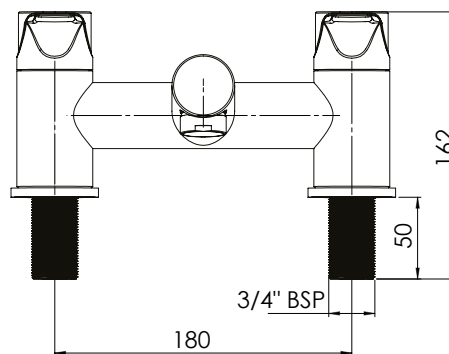


### Dene Bath Filler

NEW

UNDETPBF

- Appealing all chrome design
- Durable design including ceramic disc flow control
- Good flow rates, even on a gravity system
- Lever handle is easy to grip and turn
- Metal backnuts for secure fixing



# Eden - Stylish Performance

Eden is all about performance in a simple package. It offers a choice of one box solutions including concentric and sequential valves with both built in and exposed fittings in the box, ready to install, whatever the job. The range is completed by stylish thermostatic dual control shower valves that can be fitted with your selection of 'Mix & Match' shower accessories.

The equally elegant Eden taps offer a wide choice for both basin and bath.

## Easy to use controls

The Eden controls are tactile and designed to allow complete control of the flow and temperature



## Water Saving solution

The Eden Eco Mixer delivers a maximum flow rate of 6 l/min. Assisting compliance with building regulations and The Home Quality Mark

## Extended riser rail option

As the standard mixer bar but also features:

- Extended 940mm riser rail
- Extended 2m hose
- Supplementary lower level handset holder

Ideal for families with small children and shower chair users





### Eden design

Excellent flow rates, with the sleek and ergonomic controls that allow precise control of flow and temperature to TMV2 standard.



## Eden Concentric Mixer

One-box solutions for quality, stylish, easy to use showers



Eden Concentric Exposed



Eden Concentric Built-in

The Eden Concentric Mixer is boxed with both exposed and built-in fittings supplied. Three options are available:

### Standard

UNEDTHCM

- Suitable for all water systems including gravity fed
- Chrome kit, 1.25m hose, riser rail and 5 mode showerhead
- Surface mounting plate for easy install
- Compression fit onto 15mm pipe tails
- Optional 12 l/min flow limiter easily fitted in outlet
- DuraFlow™ shower head with removable face for internal cleaning and rub clean nozzles

### Eco

ECOEDTHCM

**As the standard mixer but also featuring:**

- 6 l/min official water efficiency rating
- Factory fitted flow limiter
- Assists compliance with Building Regulations and the Home Quality Mark

### Extended

UNEDTHCMEXT

**As the standard mixer but also featuring:**

- Extended 940mm riser rail offering a wide range of height adjustment
- Extended 2m hose offers additional reach
- Supplementary lower level handset holder included
- Ideal for families with small children and shower chair users



# Eden - Stylish Performance



## Eden Thermostatic Dual Control Mixer Shower Valves

### Single outlet or with integral diverter

Two outlet (diverter)  
UNEDTHDCDIV

Single outlet  
UNEDTHDCMX

- All chrome finish
- All metal elegant Eden handles
- Slim rectangular cover plate
- Choice of diverter for two outlets or single outlet option
- New mix and match accessories range to complement Triton dual control valves





### Eden Bar mixer with kit and brackets

UNEDTHBM

- All chrome finish
- Elegant Eden lever metal handles
- Separate flow and temperature controls with clear handle markings
- Supplied with fast fit push-fit brackets for an easy installation
- New circular kit
- 5 spray pattern rub clean circular shower head
- 1.5m anti-twist, chrome hose



### Eden Bar mixer with Diverter

UNEDTHBMDIV

- All chrome finish
- Elegant Eden lever metal handles
- Integral diverter and temperature controls with clear handle markings
- Supplied with fast fit push-fit brackets for an easy installation
- Rigid riser rail kit
- 200mm circular fixed drencher head
- Height adjustable, push button slider
- 5 spray pattern rub clean circular shower head
- 1.5m anti-twist, chrome hose

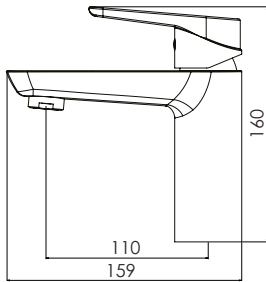


### Eden Thermostatic Sequential Mixer Shower

UNEDTHSQM

- All chrome finish
- Single, elegant Eden lever metal handle to control the temperature with constant flow
- 2 in 1 solution - includes cover plate and wall outlet for concealed option or can be exposed only
- New circular shower rail kit
- 5 spray pattern rub clean circular shower head
- 1.5m anti-twist chrome hose

# Eden-Tap Range

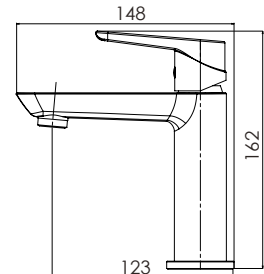


## Eden Mini Mono Basin Mixer Tap with Click Clack Waste

NEW

UNEDTPBASMM

- Contemporary all chrome design
- Compact design ideal for small to medium basins
- Lever handles are easy to grip and turn
- Durable design including ceramic disc flow control
- Horseshoe plate for secure fixing
- Flexible tap connectors
- Slotted click clack waste included

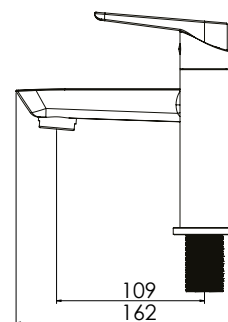
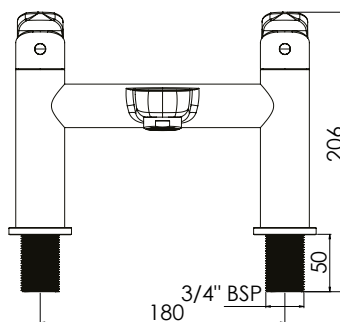


## Eden Mono Basin Mixer Tap with Click Clack Waste

NEW

UNEDTPBASM

- Contemporary all chrome design
- Ideal for medium to large basins
- Superior flow rates, even on a gravity system
- Lever handles are easy to grip and turn
- Durable design including ceramic disc flow control
- Horseshoe plate for secure fixing
- Flexible tap connectors
- Slotted click clack waste included



## Eden Bath Filler

NEW

UNEDTPBAF

- Contemporary all chrome design
- Superior flow rates, even on a gravity system
- Lever handles are easy to grip and turn
- Durable design including ceramic disc flow control
- Metal backnuts for secure fixing



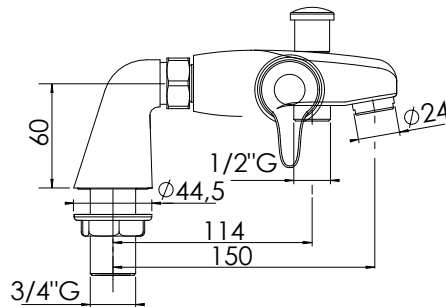
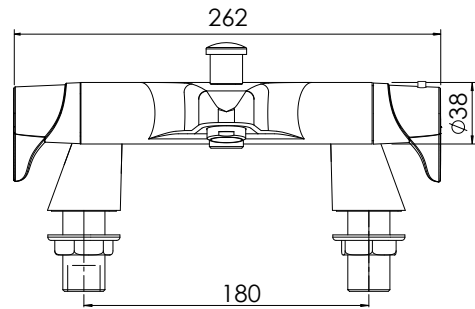
### Eden TMV2 Bath Shower Mixer with Wall Holder Kit

UNEDTHBSM

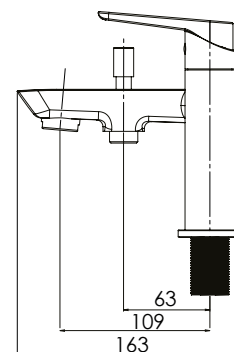
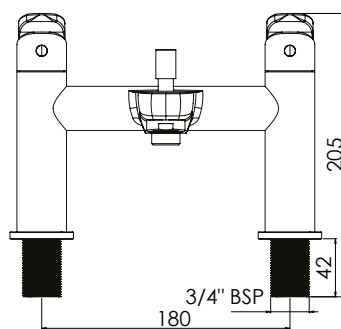
### Eden TMV2 Bath Shower Mixer with Riser Rail Kit

UNEDTHBSMRR

- Choice of accessory kit – riser rail or wall bracket, both with 2m anti-twist chrome hose & 5 spray pattern rub clean shower head
- All chrome finish
- Elegant Eden lever metal handles
- Separate flow and temperature controls – with clear handle markings
- Loose bath pillars supplied – can be bath or wall mounted



Riser rail option



### Eden Bath Shower Mixer

NEW

UNEDBSM

- Contemporary all chrome design
- Superior flow rates, even on a gravity system
- Complete with wall holder, 1.75m hose and handset
- Lever handles are easy to grip and turn
- Durable design including ceramic disc flow control
- Metal backnuts for secure fixing



# Kensey-Contemporary Design

Triton's stylish Kensey range gives you a smart modern twist on the classic crosshead handle design. Like our Eden range, the Kensey also has TMV2 thermostatic temperature control to ensure safe showering for all the family.

The concentric and sequential shower mixers provide built in and exposed fittings in the box for flexibility of choice. With the Kensey dual control valves simply select and add the Mix & Match accessories. Continue the look with your taps, choosing from traditional taps or mono mixers.

Create the bathroom of your dreams.



## Kensey Thermostatic Bar Mixer Shower & Kit

UNKETHBM

- All chrome finish
- Contemporary Kensey cross handles
- Separate flow and temperature controls with clear, visible handle markings
- Supplied with fast fit push-fit brackets for an easy installation
- New slender kit
- 5 spray pattern rub clean circular shower head
- Optional fit clip-on tray
- 1.5m anti-twist chrome hose





### Kensey's unique crosshead design

The design makes it perfect for updating a traditional-style bathroom.



**MIX & MATCH**

### Kensey Single Outlet Thermostatic Mixer Shower Valve

UNKETHDCMX

- All chrome finish
- All metal contemporary Kensey handles
- Slim design oval cover plate
- New mix and match accessories range to complement Triton dual control valves

### Kensey Dual Outlet with Diverter Thermostatic Mixer Shower Valve

UNKETHDCDIV

- All chrome finish
- All metal contemporary Kensey handles
- Slim design oval cover plate
- Diverts between two outlets of your choice
- New mix and match accessories range to complement Triton dual control valves



### Kensey Thermostatic Sequential Mixer Shower

UNKETHSQM

- All chrome finish
- Single, forward facing, contemporary Kensey metal cross handle to control the temperature with constant flow
- 2 in 1 solution – includes cover plate and wall outlet for concealed option or can be exposed only
- New slender kit
- 5 spray pattern rub clean Shower Head
- Optional fit clip-on tray
- 1.5m anti-twist chrome hose

### Kensey Thermostatic Concentric Mixer Shower

UNKETHCM

- All chrome finish
- Contemporary Kensey cross handle
- Separate flow and temperature controls with clear, visible handle markings
- 2 in 1 solution – includes cover plate and wall outlet for concealed option or can be exposed only
- New slender kit
- 5 spray pattern rub clean circular shower head
- Optional fit clip-on tray
- 1.5m anti-twist chrome hose



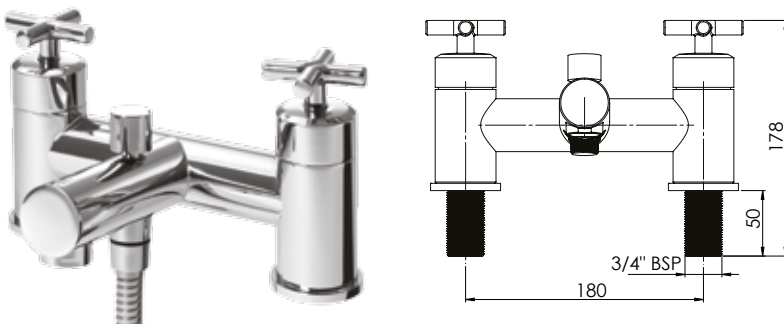
# Kensey-Tap Range



## Basin Tap Pair **NEW**

UNKETPBAS

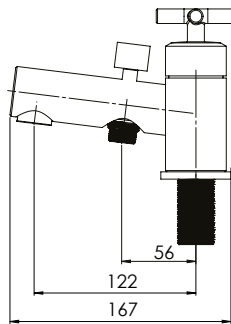
- Contemporary cross handle design
- Cross handles are familiar and easy to grip and turn
- Durable design including ceramic disc flow control
- Metal backnuts for secure fixing
- Slotted click clack waste included

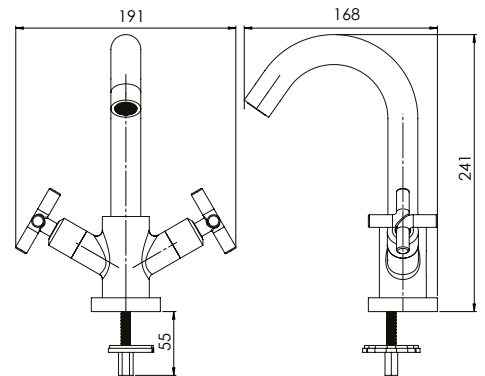


## Bath Shower Mixer **NEW**

UNKEBSM

- Contemporary cross handle design
- Cross handles are familiar and easy to grip and turn
- Superior flow rates, even on a gravity system
- Complete with wall holder, 1.75m hose and handset
- Durable design including ceramic disc flow control
- Metal backnuts for secure fixing



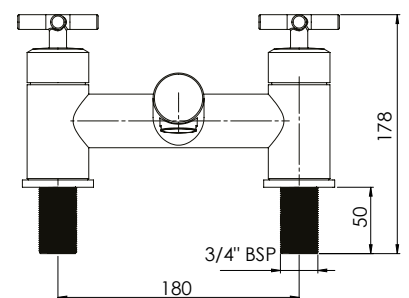


### Mono Basin Mixer Tap

NEW

UNKETPBAM

- Contemporary cross handle design
- Cross handles are familiar and easy to grip and turn
- Superior flow rates, even on a gravity system
- Durable design including ceramic disc flow control
- Horseshoe plate for secure fixing
- Flexible tap connectors
- Slotted click clack waste included

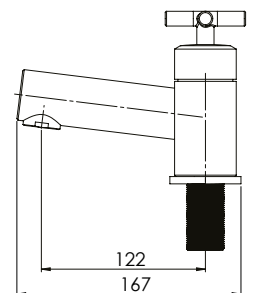


### Bath Filler

NEW

UNKETPBF

- Contemporary cross handle design
- Cross handles are familiar and easy to grip and turn
- Superior flow rates, even on a gravity system
- Durable design including ceramic disc flow control
- Metal backnuts for secure fixing



# MIX & MATCH

Now you can create your personal, perfect shower design with our flexible Mix & Match options. Simply combine our easy to use dual control valves with your own choice of shower heads - fixed, handheld or both - mixers, wall holders, arms and risers to make Affordable Style ideal for you and your home.



## Example 1

A simple, no fuss built-in shower valve and fixed wall mounted shower head - clean, stylish, easy to use and safe for all the family.

1. Circular 200mm fixed shower head
2. 400mm circular wall arm
3. Kensey Thermostatic dual control mixer shower

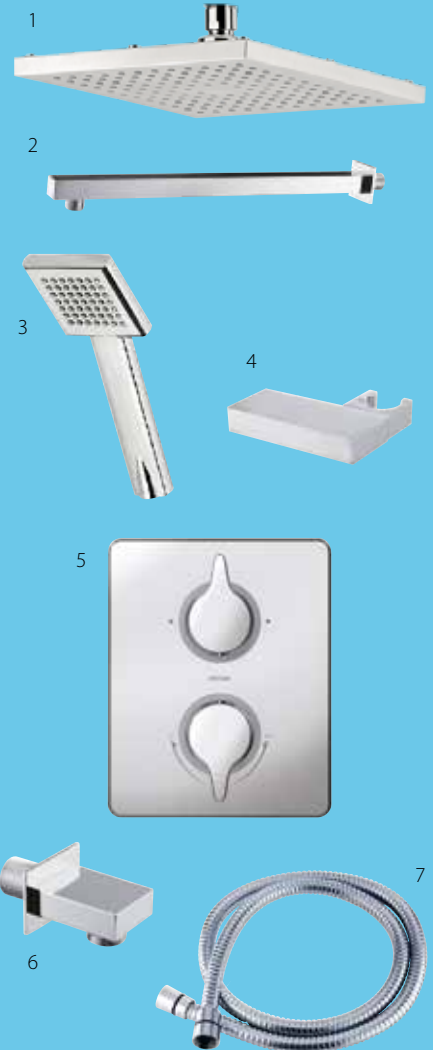





**MIX &  
MATCH**

### Example 2

For more versatile showering, choose the simplicity of a wall mounted fixed shower head, combined with a practical but stylish wall mounted, hand held shower head. All makes for a fantastic showering experience.



1. Square edge 200mm fixed shower head
2. 400mm square edge wall arm
3. Square edge 1 mode shower head
4. Square edge wall holder
5. Eden Thermostatic dual control mixer shower
6. Square edge hose outlet
7. Shower hose (1.5m)

# MIX & MATCH

Simply follow steps 1 to 5 to help you configure your perfect dual outlet shower.

We've made creating your perfect shower easy, with a variety of styles to suit any bathroom.

For more information visit:  
[www.tritonshowers.co.uk](http://www.tritonshowers.co.uk)

## Selecting your dual outlet shower package...

### Step 1

Pick a mixer shower style:



Kensey - Dual Control  
Thermostatic Mixer Shower  
with Diverter  
**UNKETHDCDIV**



Eden - Dual Control  
Thermostatic Mixer Shower  
with Diverter  
**UNEDTHDCDIV**

### Step 2

Pick a fixed shower head:



Circular 200mm  
**TSHFISABCH**



Circular thin 200mm  
**TSHFCIR200CH**



Circular thin 250mm  
**TSHFCIR250CH**



Circular thin 300mm  
**TSHFCIR300CH**



Square edge 200mm  
**TSHFKELSCH**



Square edge thin 200mm  
**TSHFSQ200CH**



Square edge thin 250mm  
**TSHFSQ250CH**



Square edge thin 300mm  
**TSHFSQ300CH**



Traditional 200 mm Rose  
**TSHFTRAD200CH**



## Step 3

Pick a ceiling or wall holder:



200mm circular ceiling  
**TSARMCIR200V**



400mm circular wall  
**TSARMCIR400H**

## Step 4

Choose a handheld shower head:

1 mode circular microphone  
**TSHMAMBICH**



1 mode circular  
**TSHUMIACHR**



5 mode circular  
**TSHM8RCCHR**



1 mode square edge microphone  
**TSHMELlich**



1 mode square edge  
**TSHMKATICH**



1 mode classic  
**TSHMTRAD1CH**



## Step 5

Choose a riser rail or wall holder:



Slender  
**TSKKIANCH**



Circular  
**TSKADAM2CH**



Square edge  
**TSKCALLCH**



Circular wall holder  
**TSHHCIRCHR**



Square edge wall holder  
**TSHHSQCHR**



Circular integrated  
**TSHHWOCIRCHR**



Square edge integrated  
**TSHHWOSQCHR**

Choose a hose outlet if integrated option (above) is not selected:



Circular  
**TSWOCIRCHR**



Square edge  
**TSWOSQCHR**

Finally, add a hose.



1.25m **TSHG1203**  
1.5m **REHOSE150C**  
1.75m **TSHER103**  
2m **TSHG1266**

## MIX & MATCH

# Our most popular combinations for dual control showers with dual outlet

To help you select the accessories you'll need with your chosen dual control mixer shower, you can choose from our most popular Mix & Match combinations. Each pack includes all you'll need to complete your shower - so you can be sure that nothing is forgotten! Remember, when you choose Triton Affordable Showering accessories they are all designed and tested to work perfectly with your shower.

For more information visit: [www.tritonshowers.co.uk](http://www.tritonshowers.co.uk)

### Combination Pack 1

TSPKDIVVHCIR

1. 200mm circular fixed head
2. 400mm circular wall arm
3. Circular wall shower head holder
4. Circular concealed wall outlet
5. 1.5m hose
6. Circular 1 mode shower head



### Combination Pack 2

TSPKDIVRRCIR

1. 200mm circular fixed head
2. 400mm circular wall arm
3. Circular concealed wall outlet
4. Slender riser rail kit
5. 1.5m hose
6. Circular 1 mode shower head







### Combination Pack 3

TSPKDIVHHSQ

1. Square edge 200mm fixed head
2. 400mm square edge wall arm
3. Square edge wall shower head holder
4. Square edge concealed wall outlet
5. 1.5m hose
6. Square edge 1 mode shower head



### Combination Pack 4

TSPKDIVRRSQ

1. Square edge 200mm fixed head
2. 400mm square edge wall arm
3. Square edge riser rail kit
4. Square edge concealed wall outlet
5. 1.5m hose
6. Square edge 1 mode shower head



# Elina - Showering for all

Elina mixer showers offer key features to help users lead more independent lives, without compromising on styling.

The Triton Inclusive Showering Range is TMV3 accredited and ideal for bathroom adaptations, commercial healthcare applications and nursing homes.



**INC:** INCLUSIVE  
SHOWERING

### Elina looped lever

A tactile modern lever handle that allows everyday use by all.



### Elina TMV3 Bar Mixer

ELITHBMINC3BOT

- Suitable for all ages and abilities
- TMV3 approved
- Maintains temperature setting closely & consistently
- Lever controls - low resistance & forward facing
- No dirt traps - easy to clean hygienic design
- Now with wall surface fixing brackets



Includes wall surface fixing brackets



**INC** INCLUSIVE  
SHOWERING

### Elina TMV3 Bar Mixer & Grab Kit

ELITHBMINC3

As standard mixer but with:

- A 940mm polished stainless steel grab riser rail able to withstand up to 150kg support load.
- Grab Riser Rail is tested to BS EN 12182



5 fixing point fixing bracket supports 150kg maximum load



Every Triton Elina Mixer Shower has the following key features:

**Easy to operate controls**

- Peg levers are easy to grip
- Clear markings

**Thermostatic temperature control**

- Delivers safe showering at all times for total peace of mind
- All TMV3 accredited

## Elina TMV3 Concentric



### Elina TMV3 Concentric - Exposed

- ELICMINCEXVO - Valve only  
ELICMINCEX - With grab riser kit

This exposed mixer is available with separate flow and temperature controls for ease of use.

- Separate flow and temperature controls
- Accessible front facing lever controls that are easy to turn
- Automatic shutdown if hot or cold supplies fail
- Simple to install and maintain
- Factory set maximum temperature at 38°C
- Ideal for use in bathroom adaptations, health care centres and nursing homes



### Elina TMV3 Concentric - Built-in

- ELICMINCBTVO - Valve only  
ELICMINCBT - With grab riser kit

With its striking cylindrical face, the built-in Elina delivers both the style and function that you would expect from all Triton showers.

### Accessorise with a Fixed Head and Wall Arm

- TSHFALICCH - Alice Fixed Head  
TSARM400REAR - 400mm Wall Arm





### Internally adjustable maximum temperature stop

- Prevents the risk of scalding by the temperature being turned up too high

### Automatic shutdown (fail safe)

- Shuts off if either the hot or cold supplies fail



## Elina TMV3 Sequential



### Elina TMV3 Sequential - Exposed

ELITMV3EXSL

Simple and easy to use, with its single control, the Elina sequential mixer also has TMV3 thermostatic performance for extra safety assurance giving to peace of mind for all the family.

- Single control for temperature adjustment with a constant flow
- Accessible front facing lever control that is easy to turn
- Automatic shutdown if hot or cold supplies fail
- Simple to install and maintain
- Factory set maximum temperature at 38°C
- Ideal for use in bathroom adaptations, health care centres and nursing homes



### Elina TMV3 Sequential - Built-in

ELITMV3BTSL

- Designed to fit flush to your wall giving a chic look to your bathroom, the Elina Built-in offers the same thermostatic features as the Elina Exposed. Choose from our selection of shower kits to suit your needs

### The Inclusive Grab Riser Kit Complements the Elina Mixer Range

TSKCAREGRABCHR

See page 13 for details



## NOTES

[illegible]

[illegible]

**TRITON** | THE UK'S  
SHOWER  
COMPANY

See you first thing Britain

**Installer Hotline:**  
02476 378 344

**Customer Services:**  
02476 372 222

**Email**  
[technical@tritonshowers.co.uk](mailto:technical@tritonshowers.co.uk)

**Website**  
[www.tritonshowers.co.uk](http://www.tritonshowers.co.uk)



Triton is a division of Norcros Group (Holding) Limited.  
Triton Showers, Triton Road, Nuneaton, Warwickshire CV11 4NR  
Brochure enquiries Tel: +44 (0) 24 7632 4460

It is our policy to improve the design and specification of our products  
and we reserve the right to depart from the design given without prior notice

LITMIXER01  
July 17